



# The Diablo Bee



Newsletter of the Mount Diablo Beekeepers Association

## February 2007

### 2007 BOARD

[www.diablobees.org](http://www.diablobees.org)

**President**

**Stan Thomas**  
(925) 228-3209

[honeymanstan1@netzero.net](mailto:honeymanstan1@netzero.net)

**First Vice President**

**Tom Lewis**  
(925) 348-4470

**Past President**  
**Stan Thomas**

**VP-Community Education**

**Judy Casale**  
(510) 881-4939

[jmcasale@comcast.net](mailto:jmcasale@comcast.net)

**VP-Member Education**

**Richard Coleman**  
925 685-6849

[rich6849@yahoo.com](mailto:rich6849@yahoo.com)

**Treasurer**

**Larry Wadler**  
(510) 444-6245

[larryw@sanfranciscocourier.com](mailto:larryw@sanfranciscocourier.com)

**Secretary**

**Lois Kail**

**Membership:**

**Gary Eubanks**  
(925) 875-1871

[beedad94568@sbcglobal.net](mailto:beedad94568@sbcglobal.net)

**Newsletter**

**Ersten Imaoka and Kieran Mone**

(925) 408-0498

[ersten3@yahoo.com](mailto:ersten3@yahoo.com)

[Kieran@usmones.com](mailto:Kieran@usmones.com)



**Next meeting:**

**7:30 pm – 02/8/07**

**Heather Farm Garden Center**

**1540 Marchbanks Walnut Creek**

### HIGHLIGHTS OF THIS ISSUE

What's the Buzz? ..... 1

Thank You! ..... 1

February Meeting ..... 1

Bee Fossil Creates New Buzz .... 2

Recipe of the Month ..... 2

Newbie Nuggets ..... 3

Announcements ..... 3

### 2007 MDBA Calendar of Events

**Feb 8 General Meeting: 7:30, Heather Farm**

**Mar 8 General Meeting: 7:30, Heather Farm  
Guest Speaker Larry Connors**

**April 12 General Meeting: 7:30, Heather Farm**

### February Meeting

*Important DATE!*

Our new VPs of Member Education, Kim and Rich, have booked Janet Brisson as our February guest speaker. Janet, from Country Rubes Farm in Grass Valley, will be giving a PowerPoint presentation and talk about IPM, which



includes spring management. She will talk about the importance of using Screened Bottom

Boards, powdered sugar and drone brood management.

She will also be bringing bottom boards that she manufactures to sell at the club for the club price of \$37.00 which includes tax. Janet also has a website, [www.countryrubes.com](http://www.countryrubes.com), where you can view the SBBs and read more about her methods of mite control

## What's the Buzz?



### THANK YOU!

We had a very well-attended and informative first meeting of the year. Thanks to all MDBA board members who gave brief over-views of their roles. There are plenty of things for us to do this month to get our hives ready for spring!

*Member reminder: Please bring your 2007 membership renewal check to the February meeting. Thank you.*

## Bee Fossil Creates New Buzz



By Sara Goudarzi, *LiveScience* Staff Writer



This oldest bee fossil to date was found in an amber specimen from northern Myanmar. Credit: *Science*

The discovery of the oldest bee fossil supports the theory that bees evolved from wasps, scientists reported today.

The 100 million-year-old fossil was found in a mine in the Hukawng Valley of Myanmar (Burma) and preserved in amber. Amber, which begins as tree sap, often traps insects and plant structures before they

fossilize.

"This is the oldest known bee we've ever been able to identify, and it shares some of the features of wasps," said lead author George Poinar, a researcher from Oregon State University. "But overall it's more bee than wasp, and gives us a pretty good idea of when these two types of insects were separating on their evolutionary paths."

The quarter-inch fossil shares traits of the carnivorous wasp such as narrow hind legs while exhibiting branched hairs on its leg, a characteristic of the modern bee that allows pollen collection.

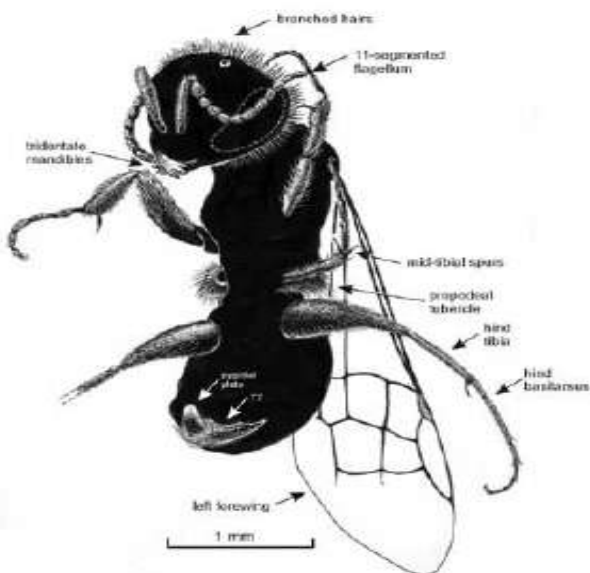


Diagram of the bee fossil with key features labeled. The fossil had several features of modern-day bees and morphological structures including branched hairs that researchers believe are associated with pollen collection. Credit: *Science*

Around the same time the bee was trapped, plants that rely on mechanisms other than the wind to spread their seeds, started expanding and diversifying. Prior to that, the world was mostly green with conifer trees that depended on the wind for pollination.

"Flowering plants are very important in the evolution of life," Poinar said. "They can reproduce more quickly, develop more genetic diversity, spread more easily and move into new habitats. But prior to the evolution of bees they didn't have any strong mechanism to spread their pollen, only a few flies and beetles that didn't go very far."

The study is detailed in Oct. 27 issue of the journal *Science*

## Recipe of the Month

### Bee Sweet Banana Bread- Makes 1 loaf Ingredients

1/2 cup honey	1/2 cup quick-cooking oats
1/3 cup butter /margarine	1 teaspoon ground nutmeg
1 teaspoon vanilla	1 cup mashed ripe banana
2 eggs	1/2 cup chopped walnuts
1/2 cup all-purpose flour	1 teaspoon baking powder
3/4 cup whole wheat flour	1/2 teaspoon salt

### Directions

Cream honey and butter in large bowl with electric mixer until fluffy. Beat in vanilla. Add eggs, one at a time, beating well after each addition. Combine dry ingredients in small bowl; add to honey mixture alternately with bananas, blending well. Stir in walnuts. Spoon batter into greased and floured 9x5x3-inch loaf pan. Bake in preheated 325°F oven 50 to 55 minutes or until a wooden toothpick inserted near center comes out clean. Cool in pan on a wire rack 15 minutes. Remove from pan; cool completely on a wire rack.

## Monthly Meeting Snack Table

**Refreshments:** If you wish to volunteer to bring refreshments to any meeting, please contact: [Stan Thomas](#).

## Newbie Nuggets.....

### BEE GESTATION PERIODS

Queen
<i>Day 0 egg layed.</i>
<i>Day 3 egg hatches.</i>
<i>Day 8 cell capped.</i>
<i>Day 16 queen emerges</i>
<i>Day 21 queen takes orientation flight.</i>
<i>Day 24 queen mates.</i>
<i>Day 28 queen starts to lay.</i>

If you deprive a hive of a queen the workers will start a cell with a three day old larva so it means it will be about 5 days until a cell is capped and 13 until it emerges and approximately 25 until she is laying (assuming she mates within a week of emerging).

Worker	Drone
<i>Day 0 egg layed.</i>	<i>Day 0 egg layed.</i>
<i>Day 3 egg hatches.</i>	<i>Day 3 egg hatches.</i>
<i>Day 9 cell capped.</i>	<i>Day 9 cell capped.</i>
<i>Day 21 worker emerges</i>	<i>Day 24 drone emerges</i>

### How Heavy.....

A gallon of honey weighs approximately 12 pounds.

### Weight of Full Supers

<i>10 frame deep = 90 lbs</i>	<i>8 frame deep = 72 lbs</i>
<i>10 frame med = 60 lbs</i>	<i>8 frame med = 48 lbs</i>
<i>10 frame shallow = 48 lbs</i>	<i>8 frame shallow = 40 lbs</i>

Snapshots at jasonlove.com



"The defendant had the motive, he had the opportunity, and let's face it, he's a killer bee."

## Membership Renewal Notice

If you need to send a new or renewal check in for your membership, please mail it to:



Larry Wadler, Treasurer  
2525 Mandela Parkway  
Oakland, CA 94607

## March speaker Larry Connor, PHD.

Mr. Connor is a regular contributor to Bee Culture and the American Bee Journal magazines, authoring articles on queen and drone biology, and bee management. Recently he began a series of articles on the biological basis of beekeeping practices. He has authored a number of publications, a series of slide sets, a video program (which he also appeared in and directed), two scientific proceedings (as editor), and scientific articles. He served as editor of the *EAS Journal*, *Honey Producer Magazine* and *Bee Science*. He has written a book called *Increasing Essentials*. His next book is titled *Bee Sex Essentials: Drones, Queens and Bee Mating*.

Our club is currently looking into sponsoring a junior beekeeper from the Contra Costa 4H program. We are seeking members who would be interested in mentoring a new beekeeper. Contact Kieran Mone (925 408-0498) or [kieran@usmones.com](mailto:kieran@usmones.com)

Lois Kale has kindly offered her seamstress services to repair member's bee's suits. Lois will donate the money she collects to the club. The only thing Lois asks is that before giving her your suits for repair, please wash them. Contact Lois Kale (925 356-2602) or [lkail@juno.com](mailto:lkail@juno.com)

**February Meeting**  
**February 8<sup>th</sup>, 2007, 7:30 pm**



*Thought for the day*

*“All the honey a **bee** gathers during its lifetime doesn't sweeten its sting”*

Old Italian Proverb



The Diablo Bee  
21 Newell Ct  
Walnut Creek, CA 94595